

# THE LION



SPECIAL COLLECTIONS  
LANGSTON HUGHES MEMORIAL LIBRARY  
LINCOLN UNIVERSITY  
LINCOLN UNIVERSITY, PA 19352

SPECIAL COLLECTIONS  
LANGSTON HUGHES MEMORIAL LIBRARY  
LINCOLN UNIVERSITY  
LINCOLN UNIVERSITY, PA 19352

Office of the President  
Lincoln University  
[Lincoln University, Pennsylvania 1938]

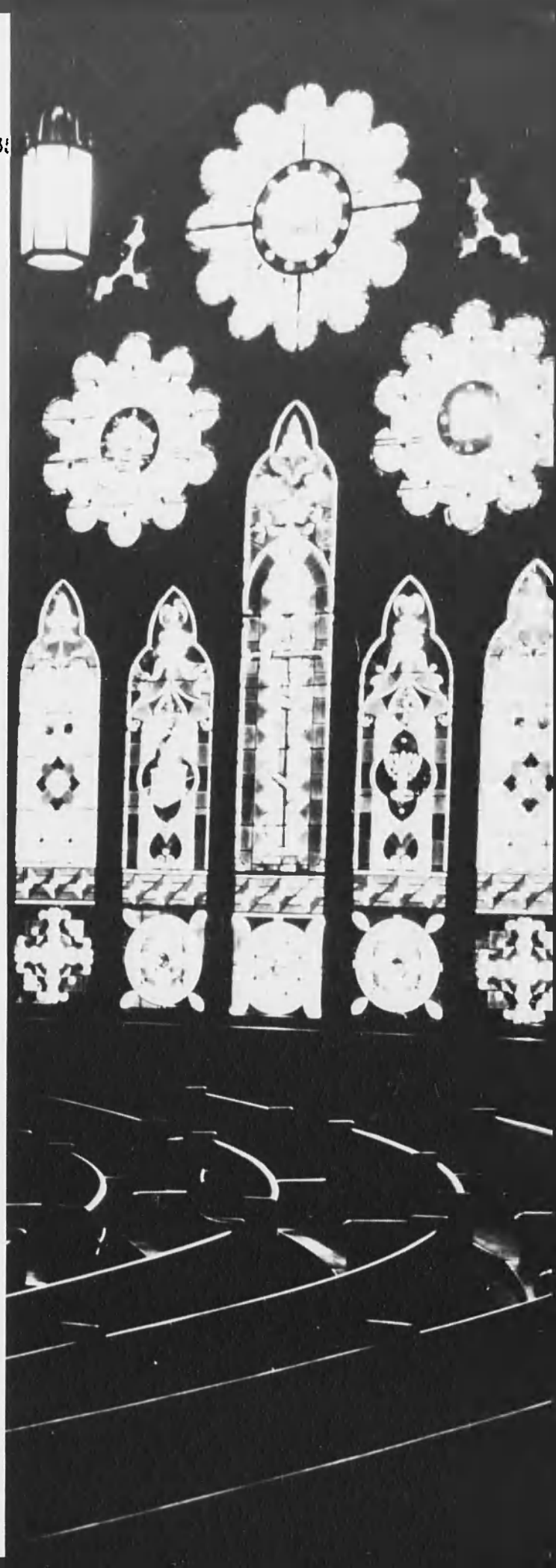
the senior class  
of the  
  
lincoln university  
of the  
  
commonwealth system  
of high education  
  
lincoln university,  
pennsylvania

presents

# the lion 1973

james v. peterson  
editor-in-chief

gwendolyn jenkins  
associate editor



Office of the President  
Lincoln University  
Lincoln University, Pennsylvania 193

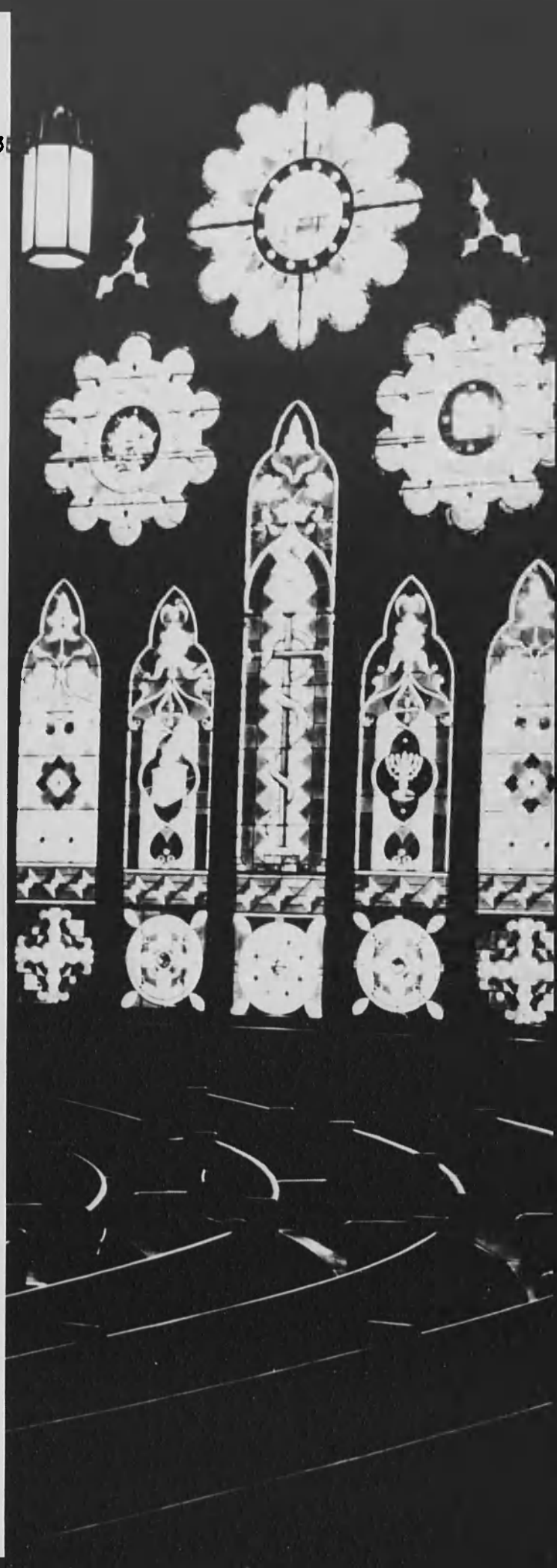
the senior class  
of the  
lincoln university  
of the  
commonwealth system  
of high education  
lincoln university,  
pennsylvania

presents

# the lion 1973

james v. peterson  
editor-in-chief

gwendolyn jenkins  
associate editor





## alma mater

Dear Lincoln, Dear Lincoln  
Thy Sons will e're be true!  
The golden hours we've spent beneath  
The dear old Orange and Blue

Will live for e're in memory,  
As guiding stars through life;  
For thee our Alma Mater dear,  
We'll rise in our might.

For we love every inch of thy sacred soil  
Every tree on thy campus green:  
And for thee with our might  
We will ever toil  
That thou mightest be supreme.

We'll raise thy standard to the sky  
Midst glory and honor to fly;  
And constant and true.  
We will live for thee anew  
Our Dear Orange and Blue  
Hail! Hail! Lincoln!

A. Dennie Bibb, '13



# messages to the class from the president

October 30, 1972

Your class, the Class of 1973, will have forever a most significant position in Lincoln's history, for you are the first graduating class since Lincoln became State-related in July, 1972. That means that you are no longer just a graduate of Lincoln University but of Lincoln University of the Commonwealth System of Higher Education.

State-relatedness means that Lincoln can expect greatly increased Commonwealth support for educational programs designed to meet the needs of the citizens of Pennsylvania. Yet nothing will be just handed to Lincoln, we shall have to design, propose, and — above all — to carry to completion imaginative, effective programs. And as we succeed in doing that Lincoln will grow in esteem and relevance, so that your lives will be favored by the enhanced role of your alma mater.

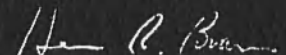
As you prepare to leave Lincoln, we hope that the years here have been truly liberating. Strange it is that the essential nature of your education at Lincoln was so ably predicted by Homer so many hundreds of years ago. I hope you recall in the Iliad wherein Peleus chose Phoenix as tutor for the young Achilles and gave Phoenix the assignment to teach him two things:

"To make thee a doer of deeds, and a master too of speech."

Lincoln has produced many doers of deeds and masters of speech. Sincerely each of these is not a simple quality attainable without a host of other, perhaps secondary but nevertheless essential, qualities that your work and life at Lincoln have set you upon the road to their genuine mastery.

Tragically you leave Lincoln at a time in the history of the world when the outlook is bleak. Pessimism is widespread. Some insist that the problems are just too complex when in reality they are just confused. May you join eagerly in relieving that confusion and in moving towards the brave new world.

Sincerely Yours,



Herman R. Branson  
President

HRB/jch

# . . . from the dean of students . . .

THE LINCOLN UNIVERSITY  
Office of the Dean of Students

October 24, 1972

The need for well educated men and women of all races is still one of the great human concerns at home and abroad. You have manifested your concern by completing the requirements for the undergraduate degree at Lincoln; and by so doing, you have added your personal contribution to the human resources of our country and the world. It would seem as though that might be all one asks of you but that is not so. You have many added responsibilities:

1. You must continue your intellectual growth and maturation.
2. You must find greater ways to eliminate human suffering.
3. You must add to the cumulative knowledge of the world.
4. You must make freedom a reality in our time.
5. You must seek out opportunities to make constructive change and extend yourself to those less fortunate than yourself.

These are not new requests for the educated and the enlightened, but they represent basic issues of mankind that unite all men and women in a continuing process of trying to make the world a better place in which to live. I am pleased that we can add your heart, hands and minds to this enormous task.







m  
r.  
  
f  
l  
o  
y  
d  
  
f  
l  
a  
k  
e

to all seniors:

The Philosopher, Decartes says of the mind that, "it is immaterial; it is conscious, and it is characterized by thinking." If the mind is characterized by thinking then your level of success in the world will be dependent upon how well you have developed your thought processes during your tenure here at Lincoln University.

The educational process will not end when you receive your degree, instead you will find that it is merely the beginning of a life wherein you will face new challenges. Life will offer many mountains, but there will also be a corresponding number of valleys. If you intend to reach the mountaintop successfully, then you must constantly *think* of ways to associate your ideas, experiences and knowledge so that once you leave the valley you will have the necessary foundation to sustain you at the height of your plateau.

It is my sincere hope that every member of this class will find success in life, and that the experience of having been a member of the undergraduate student body of Lincoln University has been rewarding and Educational.

Floyd H. Flake,  
Associate Dean of Students

in memoriam

the first black president of lincoln university



DR. HORACE MANN BOND

1904-1972

*Lest*

*We*

*Forget*

... his leadership and humility

alec "sly" buford

trenton, new jersey  
summer 1971

... his strength and endurance

frank moseley

philadelphia, pennsylvania  
summer 1972

... a precisan

norman gayraud moyer

new castle, delaware  
winter 1973



... his talent and friendliness

randy pernell

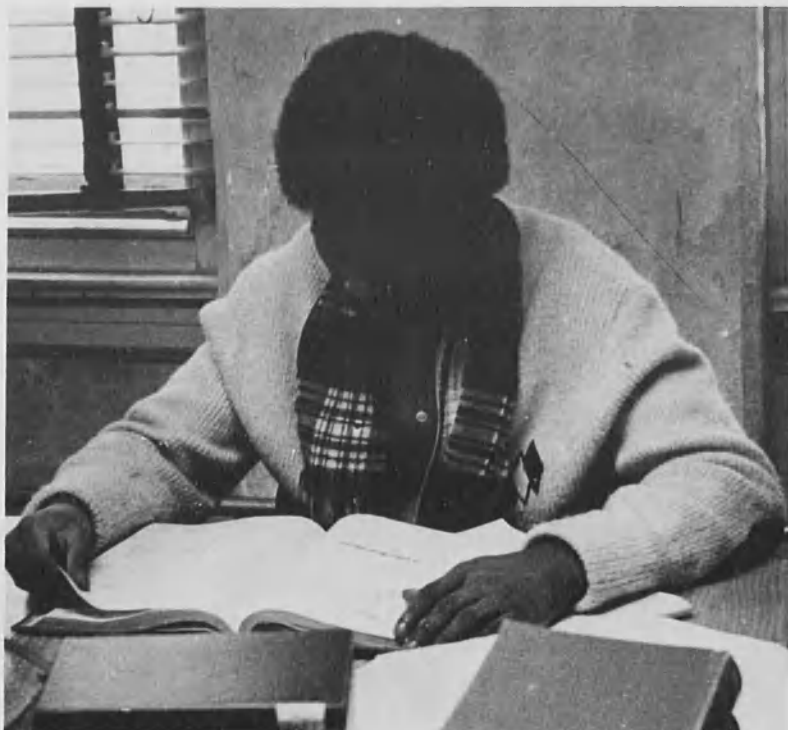
philadelphia, pennsylvania  
summer 1971

# autographs



"h  
o  
l  
d  
  
t  
i  
g  
h  
t"





s  
e  
r  
o  
u  
s  
b  
i  
z  
n  
e  
s

dick gregory — "69"



Office of the President  
Lincoln University  
Lincoln University, Pennsylvania 19352

# autographs



"at the rate we're going we may ever eat."



"wow, this takes me out".



# autographs



Gerald L. Abrams



Gordon A. Albert



Wayne A. Bailey



Aaron Bolton



Terrence D. Brown



Jacqueline E. Browne



Travis C. Broxton



Dennis Bullett



Dennis N. Cannon



Mary Jane Western



Louis Carr



Dennis M. Chambler



Clydell Cherry



Victor J. Christiansen, Jr.



Dorcas Clark



Darryl Cook



Richard A. Davis



Ernest W. Delgarde



Earl Dennis



Tyrone D. Draughn





Fannie L. Dunston



Wilbert E. Durant



Rodney Ellis



Carvin J. F. Eure



Diane G. Gooden



Aaron A. Grant



Nadine Greenlee



Arthur L. Hall



Sheryl A. Hart



Theodore R. Hawkins, Jr.



Ezra E. Hill, Jr.



Anita Stubbs  
Robert E. Hill



James W. Hudson



Gwendolyn A. Jenkins



Arthur J. Jones



Peggie R. Jones



Iris S. Judkins



Leroy Kemp



Carolyn Kimbrough



Vicki Lakin and Janice Rice



Andre Williams



Bernard Wilson



Kenneth Wilson



Veretta Woodward





**Andre Williams**



**Bernard Wilson**



**Kenneth Wilson**



**Veretta Woodward**

*Clubs,*

*Organizations,*

*And Societies*

*Clubs,*

*Organizations,*

*And Societies*

# psychology club



*The present Psychology Club was reactivated on Lincoln's campus during the spring semester of the 1971-1972 academic year through the efforts of Victoria Moseley and Gwendolyn Jenkins. The present officers of the club are Gwen Jenkins, President, Kenneth Wilson, Vice President, and Sheryl A. Hart, Secretary-Treasurer.*

The objectives of the Psychology Club are: to expose psychology majors to the issues within psychology; to present forums with prominent and known psychologist within various fields; and to inform the students of various graduate schools and opportunities within psychology. There are approximately 40 members in the Psychology Club. The club's sponsor is Professor Carlton D. Trotman.

physics



p  
h  
y  
s  
i  
c  
s

p  
h  
y  
s  
i  
c  
s

physics

the  
mathematics  
club





society for the advancement  
of

management





# hablamos español



## sociology club



the melvin b. tolson society

"the literary society"



# omicron delta epsilon



The Upsilon chapter of Omicron Delta Epsilon was founded at Lincoln University in April, 1972.

Omicron Delta Epsilon is an international honor society in Economics which was established on January 1, 1963. The society elects to its membership, any junior or senior Economics or Business Administration major with a cumulative average of 3.0.

## the economics honor society

militants for christ



“winning souls for christ”

# business-economics society



economics

accounting

business administration



alpha chi



the national honor society





*Top Row: Orville Martin, Carlos Bowen, Douglas Walker. Bottom Row: Glenn Pettiford, Calvin Wright, Conrad Westerman.*

## **ALPHA PHI OMEGA FRAT., INC.**

### **SIGMA OMEGA CHAPTER**

**Did You Know That Over \$1200.00 Is Lost  
Through Vandalism Every Month?**

**What Are You Going To Do About It?**

**We Ask For An Immediate End To This Immature  
Conduct—It Is Your MONEY You Are Losing!**

alpha phi omega fraternity, inc.

s  
i  
g  
m  
a  
  
o  
m  
e  
g  
a

# groove phi groove

## l i o n c h a p t e r



# social fellowship

# groove phi groove

l  
i  
o  
n  
  
c  
h  
a  
p  
t  
e  
r



## social fellowship

# *The Greeks*

# *The Greeks*

zeta phi beta

alpha phi alpha

omega psi phi

alpha kappa alpha

kappa alpha psi

delta sigma theta

phi beta sigma



# alpha kappa alpha sorority, inc.

## epsilon nu



*1st Row: Gail O'Neal, Kathy Evans, Sharon Nesbitt, 2nd Row: Fannie Dunston, Karen Grimes, Mary Little, 3rd Row: LaJuana Collins, Dorcas Clark, Alena Gayle, 4th Row: Veretta Woodward, Boyce Williams.*

### The History of Epsilon Nu Chapter of Alpha Kappa Alpha Sorority, Inc.

On December 13, 1969 Epsilon Nu Chapter of Alpha Kappa Alpha Sorority was founded at Lincoln University, Pa. There were twenty-five charter members. Since then four pledge lines have been initiated. Presently, there are twenty-three members on campus.

Epsilon Nu Chapter has worked hard and diligently to help make the Lincoln University Community a better place in which to live. Some of the chapter's annual projects are the "Freshman Tea", given to help freshman women get acquainted with other women on campus, the "Halloween Party" for the small children in the Lincoln University Village and "Thanksgiving Baskets" for needy families.

We will continue to strive to do our best for the community and all mankind.



# alpha phi alpha fraternity, inc.



## nu chapter

founded november 1912

“servants for all,  
we shall transcend all”



# delta sigma theta inc.,



## History of Delta Theta, Inc.

Delta Sigma Theta Sorority was founded on January 12, 1913 at Howard University, the founders envisioned an organization of college women pledged to serious endeavor and community service. These youthful students demonstrated a vital concern for social welfare, academic excellence and cultural enrichment, de-emphasizing the social side of sorority life. Their ideas of scholarship and service have withstood the test of time, and today Delta Sigma Theta is a public service sorority, dedicated to a program of sharing membership skills and organizational services in the public interest.

In February of 1913, Delta Sigma Theta was incorporated as a National Organization. The record incorporation is filed in the Congressional Library in Washington, D.C. Today, there are over 60,000 members and 406 chapters in 48 states, and the Republics of Haiti and Liberia.

On January 12, 1963 at its Fiftieth Anniversary celebration in Washington, D.C., President John F. Kennedy, the guest of honor, congratulated the organization on its "service to the country".

The Zeta Omega Chapter of Delta Sigma Theta, Inc. was founded at Lincoln University on December 13, 1969. There were 16 charter members. At the present time, there are 34 members, who participate in various school activities and are at the service of the university and the community.

z  
e  
t  
a  
o  
m  
e  
g  
a

kappa alpha psi

ΦΝΠ

e  
p  
s  
i  
l  
o  
n



ΚΑΨ

fraternity, inc.

zeta phi beta sorority, inc.  
delta delta chapter

Z  
Φ  
Β



Φ  
Β  
Σ

phi beta sigma fraternity, inc.  
mu chapter

# omega psi phi fraternity, inc.

the ques



Ω  
Ψ  
Φ

“the sons of blood and thunder”

# omega psi phi fraternity, inc.

the ques



Ω  
Ψ  
Φ

“the sons of blood and thunder”



*The Chosen Few*



*The Chosen Few*

CAROL ANDERSON



GERALD ABRAMS



JACQUELINE BAKER



THOMAS BAILEY



GAIL BANKS



MICHAEL BENJAMIN

AARON BOLTON



NORMA BOSTIC

JOAN BROADFIELD



GLORIOUS BRIGHT



LYNNE M. BROWN



KEITH BROWN



TERENCE BROWN



KENDAL BUTLER

GARY CAMPBELL



THERESA CAMPBELL

DENISE CHAMBLEE



LOUIS CARR



BRENDA CLARK



VICTOR CHRISTIANSEN





DORCAS CLARK



SANDRA CLARK

JEROME CLEMONS



FRANCIS COLEMAN



DARRYL COOK



ARNOLD DORSETT



CAROL COTMAN



RALPH CROSBY

PATRICIA DARRAH



RICHARD DAVIS

ANTHONY DOCHERY



KATHY DRAKE

WESLEY EGGLESTON



FANNIE DUNSTON



BELINDA EMERSON



RODNEY ELLIS



CHARLES FARRELL



ALEXANDER GARRISON

GERALD L. GARY



YOLANDA GASKINS



AARON GRANT



NADINE GREENLEE



KAREN GRIMES



GLORIA GUESS



DONALD HAMILTON



SHERYL A. HART

THEODORE HAWKINS



FREDIA HIGHLAND

JAMES HUDSON



EARL HILL



KATHLEEN M. JOHNSON



DORA J. JOHNSON



LISA JOHNSON



SHARON L. JOHNSON

DONNA A. JONES



PEGGIE JONES



SHEILA JONES



ILONA JAUNAKAIS



IRIS JUDKINS



CAROLYN KELLY

LEROY KEMP



THEODORE KETCHUM

CAROLYN KIMBROUGH



SHIRLEY KIMS



CHRISTINE KING



FITZROY KINGTON



VICKI LAKIN



ESTEL LANKFORD



IAN LARRIER



WALTER LI

MARY LITTLE



SERETHEA MATTHEWS



ALBERTA MCCARGO



PATRICK MCKINLEY



BRUCE MCMILLAN



JACQUELINE MEDINA

KERRY D. MOORE



JESSE MORGAN

VICTORIA MOSELEY



DEBORAH MUSGRAVE

SHARON NESBITT



LAURA NELSON



DENNIS NORWOOD



BERNADETTE NORTON



GAIL O'NEAL



VIOLET OSBORNE

ERNEST PALMER



GWENDOLYN PARKER



JAMES PETERSON



GLENN PETTIFORD



BARBARA PRICE



LAVERNE PRINGLE



KATRINA REESE



JANICE RICE

RODERICK RICHARDSON



HOWARD ROBERTSON



JUBAE SETTLES



CASANDRA SISTRUN



RONALD SLAUGHTER



REGINALD SMITH

SHEILA SMITH



CAESAR SPEIGHT

ANITA STUBBS



REGINA THORNTON

MATT THOMPSON



COLIN THOMPSON



DIANE TURNER



MARY THORPE



NANCY VAN BLAKE



ERNEST WAGNER

ANTHONY WALKER



DONZELLE WATSON



MARY JANE WESTERN



VERETTA WOODARD



ANDRE WILLIAMS



CONSTANCE WILLIAMS

PATRICIA WILLIAMS



LAWRENCE WILLIAMS

RAPHAEL WILSON



KENNETH WILSON



TYRETA YOUNG



GLORIA WHITE



ERNEST DELAGARDE

*the*

*light*

*side*

*of*

*'73*



1. Carol Anderson



2. Robert Bailey



3. Thomas Bailey



4. Otis Blackburn



1. Norma Bastie



2. Jewel Carmon



3. Rosilyn Chiles



4. Brenda Clark



Carol Colman



Ralph Crosby



Ernest Delagarde



Alfonso Dix



Anthony Dockery



Kathy Drake



Charles Edwards



Wesley Eggleston



Belinda Emerson



Yolanda Gaskins



George Gooden



Gloria Guess





Donald Hamilton



Yvonne Harrison



Arthur Henderson



Earl Jennings



Kathy Johnson



Sharon Johnson



Roger Kearn



Willie King



Carl Lamb



Roland Lamb



Zachary Lewis



Walter Li



Bruce Mac Millan



Vicki Mosley



Jubae Settles



Cecil Sievers



Joel Shepherd



Pringle Simmons



Ron Slaughter



Mary Little



Serethea Matthews



Patrick McKinley



Jacqueline Medina



Jay Nixon



Laura Nelson



Sharon Nesbitt



Irving L. Newlin





Bernadette Norton



Gail O'Neal



Ronald Powell



LaVerne Pringle



Katrina Reese



Roderick Richardson



Thomas Stafford



Diane Turner



**Jerome Wallace**



**Douglas Walker**



**Mark West**



**Luther Wilson**



Calvin Wright



Tyretta Young



Reggie Smith



Issaih Solomon



Harry Thomas



Joan Thomas



Matthew Thompson



Larry Upperman



Ernest Wagner



Anthony Walker



# HOW WE BECAME THE CHOSEN FEW

The school year 1969-1970 was a year of drastic change everywhere, but especially on the campus of Lincoln University.

Beanies, threats, and everything conventional greeted us upon our entrance to Lincoln. However, to the surprise of the upperclassmen, faculty and administration as well, we proved to be a very revolutionary class.

We were known as the Party Hardy class, and we held true to our motto "When we party, we party hardy" by attending all the social functions. We partied off of "Hot Fun in the Summertime," Kool & the Gang, and "Can't get Next to You." We got mellow off of "Goin' in Circles."

Then tragedy occurred. An upperclassman died, for reasons still unknown. Yet, there was some link between his death and the inadequate medical facilities which plagued Lincoln at that time.

Through massive boycotts and protests, we displayed to the upperclassmen our ability to be responsible, sincere students.

We set aside our party habits and led in the fight for twenty-four hour visitation. With constant pondering and downright stubbornness, we were able to obtain that privilege which the campus is now enjoying.

As the spring of '70 came upon us, we were once again dancing to the tunes of "I Want You Back" and the Delfonics' "Didn't I Blow Your Mind This Time." Meanwhile, "Rare Earth" reproduced "Get Ready," which kept us dancing a long while. Not so long, though, that we were blind to the appalling situations that took place at Kent and Jackson State.

We, being the zealous class that we are, held a moratorium in light of the crisis. We spearheaded protest and participation of 100% in the attempted "March on Oxford."

So that our efforts were not fruitless, we gained national attention by contacting other Black schools for support in our struggle.

The struggle, however, was interrupted by the threat of a Ku Klux Klan convention. Then, with less than six hours notice, the then-acting President, Bernard Harleston, dismissed the entire campus for the remaining semester. Thus, ended our experience as freshmen.

We entered our sophomore year less boisterous and more mature. Yet, it was still in our blood to party. We danced to the tune of James Brown's "Superbad" and got high to the sounds of Buddy Miles's "Down by the River" and Jimi Hendrix's "Band of Gypsies."

Familiar tunes were also sung by the large pledge lines which were features of the Class of '73. Among them were "The Damned," "Sleazy 16," "The Lone Crescent," "Band of Gypsies," "Devious Dozen," "Ninth Dimension," "The Satanic Seven," "Funkadelic Four," and the "Freak Fourteen."

The year passed slowly, but once spring came, we decided again to "Get up, Get into it, and Get involved." Some of our involvements turned to the fashion world, as sisters let loose with their hot pants and their naturals.

This year there were no threats of the Ku Klux Klan and no apparent reason to boycott. So, for the first time, we took spring finals and our year

ended in a very conventional manner.

Our junior year started on a very sad note, for we had lost two members of the class, Randy Pernell and Alex "Sly" Buford. Sly has been our first class president, and Randy, with his vibrant personality, was the life of any party.

Although their deaths greatly affected our class, we maintained the Spirit of '73: forceful, anxious and ready to party. We danced to the sounds of Mandrill, Chicago, and Isaac Hayes. However, we never completely put aside the academics. Members of the Class of '72 and our class formed the Lincoln Chapter of Alpha Chi Honor Society, and the Class of '73 dominated the Dean's list.

Once again the spring offered new horizons. Our class took on political overtones, as we organized the protest march against Foote Chemical Company. The grounds of the industry were filled with signs saying "Take the chrome, and Ship it Home!"

After this incident, we resumed our normal syndrome of booking and partying. We got high for the last time with some of our best friends from the Class of '72, waiting and praying for the day when we would take their place.

It is now our senior year, and the student body is governed by two of the most responsible and dedicated leaders ever to set foot on Lincoln's campus — of course, from the Class of '73: President Matt Thompson and Treasurer Ron Slaughter.

These men implemented such activities as the Graterford Prison Program, Sleighton Farm Program, the political education classes, and the conferring of an honorary doctorate degree on the late

Amilcar Cabral.

Also, for the first time women began to take on leadership responsibility as in the case of the Homecoming Committee. The Committee was chaired by Miss Jewel Carmon, a member of the Class of '73.

As we look back on the changes that have occurred, we, the Class of '73, remember when:

1. The African Ritual was the "Miss Lincoln University Pageant."
2. Freshmen had to wear beanies.
3. At the talent shows one got stoned with pennies.
4. One was afraid to walk past the rabble bench.
5. The new library and gym were just a dream.
6. Basketball fans were so enthusiastic that they shook Grim Gym.
7. We cared enough to meet in the chapel and organize a protest.
8. Dorms were restricted, and during visitation "three feet" had to be on the floor.
9. We did the breakdown, penguin, charge and the football.
10. We were "all" together freshman year, and given the title of "Sly and the Family Thieves."

Yes, we look back at the many changes that have occurred at Lincoln. In a world that is destined to be ours, we ask the question, "Who Really Cares?" The answer is obvious: None but the CHOSEN FEW!



ABRAMS, GERALD L., 2270 N. Chadwick St., Philadelphia, Penna. 19132  
 ALBERT, GORDON A., 203 Frank Ave., Mamaronck, New York  
 ANDERSON, CAROL C., 2216 N. Hobart St., Philadelphia, Penna., 19131  
 BAILEY, ROBERT D., 6168 Haverford Ave., Philadelphia, Penna., 19151  
 BAILEY, THOMAS L., 2400 Glenwood Ave., Philadelphia, Penna., 19121  
 BAILEY, WAYNE A., 136 S. Newberry St., York, Penna., 17404  
 BAKER, JACQUELINE A., 1351 W. 115th St., Chicago, Illinois 60643  
 BALDWIN, PAUL I., 5231 Race St., Philadelphia, Penna.  
 BANKS, GAIL, 7091 Forrest Ave., Philadelphia, Penna., 19138  
 BENJAMIN, MICHAEL D., 1203 S. 27th St., Apt. 1A, Altoona, Penna. 16603  
 BLACKBURN, OTIS  
 BOLTON, AARON, 2038 N. 25th St., Philadelphia, Penna.  
 BOSTIC, NORMA P., 1670 E. 174th St., Bronx, New York, 10472  
 BOWENS, DANIEL  
 BRIGHT, GLORIOUS D., 1923 N. Myrtlewood St., Philadelphia, Penna. 19121  
 BROADFIELD, JOAN  
 BROWN, KEITH E., 2306 Bridgeport Drive, Memphis, Tennessee  
 BROWN, LYNNE M., 1214 N. Franklin St., Pittsburgh, Penna., 15233  
 BROWN, TERNECE D., 1914 Redd St., Philadelphia, Penna., 19146  
 BROWNE, JACQUELINE E., 4753 N. 10th Street, Philadelphia, Penna.  
 BROXTON, TRAVIS C., 342 Hutter Ave., Scotch Plains, New Jersey  
 BULLETT, DENNIS  
 BUTLER, KENDAL S., P.O. Box N-4466, Nassau, N.P. Bahamas  
 CAMPBELL, GARY  
 CAMPBELL, THERESA D., 835 Riverside Drive, New York, New York  
 CANNON, DENNIS N., 2309 Lorick Ave., Columbia, South Carolina, 29203  
 CARMON, JEWEL, 4013 Old York Road, Philadelphia, Penna.  
 CARR, LOUIS, 936 Spaulding Ave., Norfolk, Virginia  
 CHAMBLEE, DENISE M., 918 Davton Ave., St. Paul, Minnesota, 55104  
 CHANEY, ROY E., 9 Weber Drive, Port Chester, New York  
 GLENWOOD, CHARLES  
 CHERRY, CLYDELL, 1121 Harrison St., Gary, Indiana  
 CHILES, ROSILYN M., 2303 4th Ave., Richmond, Virginia  
 CHRISTIANSEN, VICTOR J., JR., 217 Smith St., Salen, New Jersey 18079  
 CLARK, BRENDA A., 19 Sussex Ave., Apt. G, East Orange, New Jersey  
 CLARK, DORCAS, 74 Wolcott Terrace, Newark, New Jersey 07112  
 CLARK, SANDRA M., 5407 11th St., N.E., Washington, D.C.  
 CLEMONS, JEROME R., 2 Elmwood Ave., Charleston, South Carolina  
 COLEMAN, FRANCIS J., 2328 Williams St., Twin Oaks, Chester, Penna. 19014  
 COOK, BURTON  
 COOK, DARRYL, 6010 2nd St., N.W. Washington, D.C.  
 COTMAN, CAROL E., 33 Queen Ann Road, Harwich, Massachusetts  
 CROSBY, RALPH JR., 1024 Rivington St., Roselle, New Jersey 07203  
 CUNNINGHAM, MICHAEL  
 DARRAH, PATRICIA  
 DAVIS, RICHARD A., 1829 Forster St., Harrisburg, Penna., 17103  
 DELAGARDE, ERNEST W., 229-A Bournfield, P.O. Box 837 St. Thomas, V.I.  
 DENNIS, EARL, 1815 Willow St., McKeesport, Penna.  
 DIX, ALFONSO M., 803 W. 8th St., Chester, Penna. 19013  
 DOCKERY, ANTHONY  
 DORSETT, ARNOLD A., Nassau, New Providence, Bahamas, P.O. Box 2041  
 DRAKE, KATHY L., 157 W. 111th St., Apt. 4E, New York, New York 10026  
 DRAUGHN, TYRONE D., 210 Chestnut Ave., Newport News, Virginia 23607  
 DUNCAN, LARRY  
 DUNSTON, FANNIE L., 130 Baruch Place, Apt. D-32, New York, New York 10002  
 DURANT, WILBERT E., 413 Brunswick St., Wilmington, North Carolina 28407  
 DURNELL, WARNER  
 EDWARDS, CHARLES, 132 E. Catherine St., Chambersburg, Penna.  
 EGGLESTON, WESLEY  
 ELLIS, RODNEY D., 218 13th St., Niagara Falls, New York  
 EMERSON, BELINDA, 1944 N. 22nd St., Philadelphia, Penna., 19121  
 EVANS, DAVID G., 2507-B Wetherill St., Chester, Penna.  
 EURE, CURVIN J. F., 2422 Rubicam Ave., Willow Grove, Penna., 19090  
 FELDER, WILLIAM G., 612 S. 9th St., Philadelphia, Penna.  
 FIELDS, CARL  
 FOSQUE, BRUCE E., 36 Grant St., Englewood, New Jersey, 17631  
 GARRISON, ALEXANDER JR., 2417 W. Montgomery Ave., Philadelphia, Penna. 19121  
 GARY, GERALD L., 3814 N. Smedley St., Philadelphia, Penna. 19141  
 GASKINS, YOLANDA L., 1122 Owen Place, N.E., Washington, D.C. 20002  
 GOODEN, DIANE G.  
 GOODEN, GEORGE R., 11708 Continental, Cleveland, Ohio  
 GOODRUM, GEORGEANNE L., 5518 Master St., Philadelphia, Penna., 19131  
 GRANT, AARON A., 471-B Dudley St., Roxbury, Massachusetts, 02119  
 GREENLEE, NADINE, 1305 Pennsylvania Ave., Pittsburgh, Penna., 15233  
 GRIMES, KAREN L., 2504 Joppa Road, York, Penna. 17403  
 GUESS, GLORIA E., 592 N. Horner's Lane, Rockville, Maryland 20850  
 HALL, ARTHUR L., 840 Smith St., Norristown, Penna., 19401  
 HAMILTON, DONALD E., 122 E. Lake St., Middleton, Delaware 19709  
 HARMON, MICHAEL A., 420 E. Woodland Ave., Springfield, Penna., 19064  
 HARRIS, JOSEPH W., 41 E. Providence Road, Yeadon, Penna.  
 HARRISON, YVONNE V., 305 Fountain Ave., Brooklyn, New York 11208  
 HART, SHERYL A., 5477 W. Morse St., Philadelphia, Penna.  
 HAWKINS, THEODORE R., JR., 621 W. Cliveden St., Philadelphia, Penna. 19119  
 HENDERSON, ARTHUR  
 HETZER, TIMOTHY B., Route 1, Box 102, Nottingham, Penna., 19362  
 HIGHLAND, FREDIA, 2455 Edgelev St., Philadelphia, Penna.  
 HILL, EZRA E., JR., 3406 Alto Road, Baltimore, Maryland 21216  
 HILL, ROBERT E., 1225 W. Washington Ave., Pleasantville, New Jersey  
 HUDSON, JAMES W., 1450 N. Vodes St., Philadelphia, Penna., 19131  
 JEFFERSON, JACQUELINE Y., 1802 3rd Ave., Beaver Falls, Penna.  
 JENKINS, GWENDOLYN A., 1759 N. 29th St., Philadelphia, Penna., 19121  
 JENNINGS, W. EARL, 179-45 Selover Road, Jamaica, New York 11434  
 JOEL, TREMAINE C., 1161 Torrey Drive, Fayetteville, North Carolina  
 JOHNSON, DORA J., Route 1, Box 377, Monongahalia, Penna., 15063  
 JOHNSON, KATHLEEN M., 5726 Poplar St., Philadelphia, Penna., 19131  
 JOHNSON, LISA Z., 2112 N. Spruce St., Wilmington, Delaware  
 JOHNSON, SCOTT  
 JOHNSON, SHARON-LEE, 59 Miller Ave., Central Islip, Long Island, New York  
 JONES, ARTHUR J., P.O. Box 4136, Nassau, Bahamas  
 JONES, DONNA A., 1058 Mt. Pleasant Ave., Wayne, Penna., 19087  
 JONES, PEGGIE R., 1290 Lafavette Ave., Bronx, New York, 10474  
 JONES, SHIELA A., 6227 N. Bouvier St., Philadelphia, Penna.  
 JUDKINS, IRIS S., 410 Franklin St., Williamsburg, Virginia  
 KELLY, CAROLYN L., 28 Francis Ave., Ambler, Penna., 19002  
 KEMP, LEROY, 1505 N. Bailey St., Philadelphia, Penna., 19121  
 KERN, ROGER, 1369 E. 92nd St., Cleveland, Ohio 44106  
 KETCHUM, THEODORE N., 413 Grove Road, Verona, Penna., 15147  
 KIMBROUGH, CAROLYN L., 2601 North Corlies St., Philadelphia, Penna., 19132  
 KIMS, SHIRLEY, 1810 Lexington Ave., New York, New York 10029  
 KING, CHRISTINE H., 1002 W. Columbia Ave., Philadelphia, Penna., 19122  
 KING, WILLIE C., 3370 W. Manor Lane, S.W. Atlanta, Ga. 30311  
 KINGSTON, FITZROY O., 4024 De Reimer Ave., Bronx, New York, 10466  
 LAKIN, VICKI N., 711 Amsterdam Ave., New York, New York 10025  
 LAMB, CARL W., 6649 Germantown Ave., Philadelphia, Penna. 19119  
 LAMB, ROLAND C., 6649 Germantown Ave., Philadelphia, Penna., 19119  
 LANKFORD, ESTEL, JR., 5363 Gainor Road, Philadelphia, Penna., 19131  
 LARRIER, IAN  
 LATHAM, MICHAEL  
 LEWIS, ZACHARY S., 27 Harrison St., Poughkeepsie, New York  
 LI, WALTER  
 LITTLE, MARY E., 492 Schenck Ave., Apt. 1-B, Brooklyn, New York 11207  
 MAJORS, GARY W., 404 N. Darlington St., West Chester, Penna., 19380  
 MARTIN, VALERIE E., 556 Liberty St., Orange, New Jersey  
 MARTIN, J.C.  
 MATTHEWS, SERETHEA A., 1215 W. Seltzer St., Philadelphia, Penna.  
 McCARGO, ALBERTA L., Mill Road, Cherry Hill, New Jersey  
 McKINLEY, PATRICK, 243 Bailey Road, Yeadon, Penna.  
 McMILLAN, BRUCE, 27 E. Upsal St., Philadelphia, Penna., 19119  
 MILES, ANTOINE, 925 W. 9th St., Chester, Penna., 19013  
 MOODY, JOSEPH H., 115 Shore St.  
 MOORE, KERRY D., 1115 Pearl St., Pittsburgh, Penna., 15221  
 MORGAN, JESSE L., JR., 1708 Maplewood Ave., Pittsburgh, Penna., 15221  
 MOSELEY, VICTORIA A., 1250 S. Markoe St., Philadelphia, Penna., 19143  
 MUHAMMAD, SAKINAH ABDO'ALLAH, 1690 193rd St., Hollis, New York  
 MUSGRAVE, DEBORAH L., 220 Highland Ave., North Wales, Penna.  
 NELSON, LAURA A., 341 S. 4th St., Reading, Penna. 19602  
 NESBITT, SHARON D., 5343 Florence Ave., Philadelphia, Penna., 19143  
 NEWLIN, IRVING L.  
 NORTON, M. BERNADETTE, 913 E. Slocum St., Philadelphia, Penna., 19150  
 O'NEAL, GAIL, 25 Dwight St., Jersey City, New Jersey 07305  
 OSBORNE, VIOLET, 2300 N. 28th St., Richmond, Virginia  
 PALMER, ERNEST E., 13606 Bartlett Ave., Cleveland, Ohio 44120  
 PARKER, GWENDOLYN W., 1534 D Street, S.E. Washington, D.C. 20003  
 PETERSON, JAMES V., 908 Carver St., Fayetteville, North Carolina 28301  
 PETTIFORD, GLENN M., 1141 Drew St., Durham, North Carolina  
 POWELL, RODERICK T., 523 Penn St., Chester, Penna., 19013  
 POWELL, RONALD  
 PRICE, BARBARA J., 1215 Locust St., McKeesport, Penna., 15132  
 REESE, KATRINA C., 605 Tuckerman St., N.W. Washington, D.C. 20011  
 RICE, JANICE L., 206 Walnut St., Morton, Penna., 19070  
 RICHARDSON, BEN, 20 Summit Ave., Paoli, Penna.  
 RICHARDSON, RODERICK L., 618 Orchard St., New Haven, Conn., 06511  
 ROBERTS, KEITH M., 33 Whittier St., East Orange, New Jersey  
 ROBERTSON, HOWARD L., 1810 Edmondson Cr., Memphis, Tennessee  
 ROBINSON, MEL P., 10-H Harrison Village, McKeesport, Penna., 15132  
 ROGERS, MICHAEL T., 123 16th St., N.E. Washington, D.C.  
 ROUSE, LINDA  
 SCHMECK, KAREN  
 SCOTT, KENNETH  
 SEABROOK, HARVEYSETTLES, JUDITH J., 110 W. 143rd St., New York, New York 10030  
 SHEPHERD, JOEL  
 SHIELDS, DAN  
 SIEVERS, CECIL  
 SIMMONS, PRINGLE D., 1075 Plymouth Ave., Rochester, New York, 14608  
 SIMPKINS, REGINALD  
 SISTRUN, CASANDRA, 1352 College Hill Drive, Cheyney, Penna.  
 SLAUGHTER, RONALD L., 2479 77th Ave., Baton Rouge, Louisiana, 70807  
 SMITH, BETTE V., 8 Lawrence Ave., Elmsford, New York, 10523  
 SMITH, REGINALD, 809 S. Allison St., Philadelphia, Penna., 19143  
 SMITH, SHEILA R., 1506 N. 10th St., Philadelphia, Penna. 19122  
 SPEIGHT, CAESAR L., 586 Seagirt St., Pittsburgh, Penna.  
 STAFFORD, THOMAS  
 STUBBA, ANITA D., 8 W. Cedar St., Central Islip, New York 11722  
 THOMAS, HARRY C., 7042 Lincoln Drive, Philadelphia, Penna., 19119  
 THOMAS, JOAN H., 301 78th St., Seat Pleasant, Maryland, 20027  
 THOMPSON, MATT F., 622 Court H., Jacksonville, Florida 32209  
 THORNTON, REGINA  
 THORPE, MARY W., 8067 Temple Road, Philadelphia, Penna., 19150  
 TODD, JAMES  
 TRIBBLE, ROMIE  
 TURNER, DIANE Y., 3345 Clay St., N.E. Washington, D.C. 10029  
 UPPERMAN, LAWRENCE A., 267 Seneca Place, Plainfield, New Jersey  
 VALENTINE, ALVIN M., JR., 253 E. Market St., West Chester, Penna., 19380  
 VAN BLAKE, NANCY C., 674 W. 8th St., Plainfield, New Jersey 07060  
 VOLPE, AMADOE  
 VOLPE, DIANE  
 WAGNER, ERNEST C., P.O. Box 2463, St. Thomas, Virgin Islands  
 WALKER, ANTHONY D., 642 E. Chestnut St., Coatesville, Penna., 19320  
 WALKER, DOUGLAS O., 2335 Montebello Terrace, Baltimore, Maryland 21214  
 WALLACE, JEROME E., 2640-E Glenwood Drive, Philadelphia, Penna., 19121  
 WATSON, DONZELLE, 115 Fairview Avenue, Lansdowne, Penna., 19050  
 WATSON, LARRY, 11801 S.W. 223rd St., Miami, Florida  
 WEATHERS, CHARLES  
 WEST, MARK A., 141-13 181st St., Jamaica, New York  
 WESTERN, MARY-JANE, 160 McClellan Ave., Cookeville, Tennessee  
 WHITE, GLORIA, 83 Littleton St., Newark, New Jersey  
 WILLIAMS, LAWRENCE P., 73 Kissav Road, Freetown, Sierra Leone, W. Africa  
 WILSON, KENNETH, P.O. Box 125, Woodstown, New Jersey 08098  
 WILSON, KERMIT  
 WILSON, LUTHER R., JR., 1409 S. 54th St., Philadelphia, Penna.  
 WILSON, RAPHAEL B., 337 Peabody St., N.E. Washington, D.C. 20011  
 WOODARD, RAYMOND T., 22 Herbert St., New Castle, Delaware  
 WOODARD, VERETTA C., 5113 Fitch St., S.E. #201, Washington, D.C.  
 WRIGHT, CALVIN  
 WRIGHT, STERLING F., 520 Lincoln Drive, Yellow Springs, Ohio  
 YOUNG, TYRETA, 347 E. Airy St., Norristown, Penna., 19401

Office of the President  
Lincoln University  
Lincoln University, Pennsylvania 19352

11

